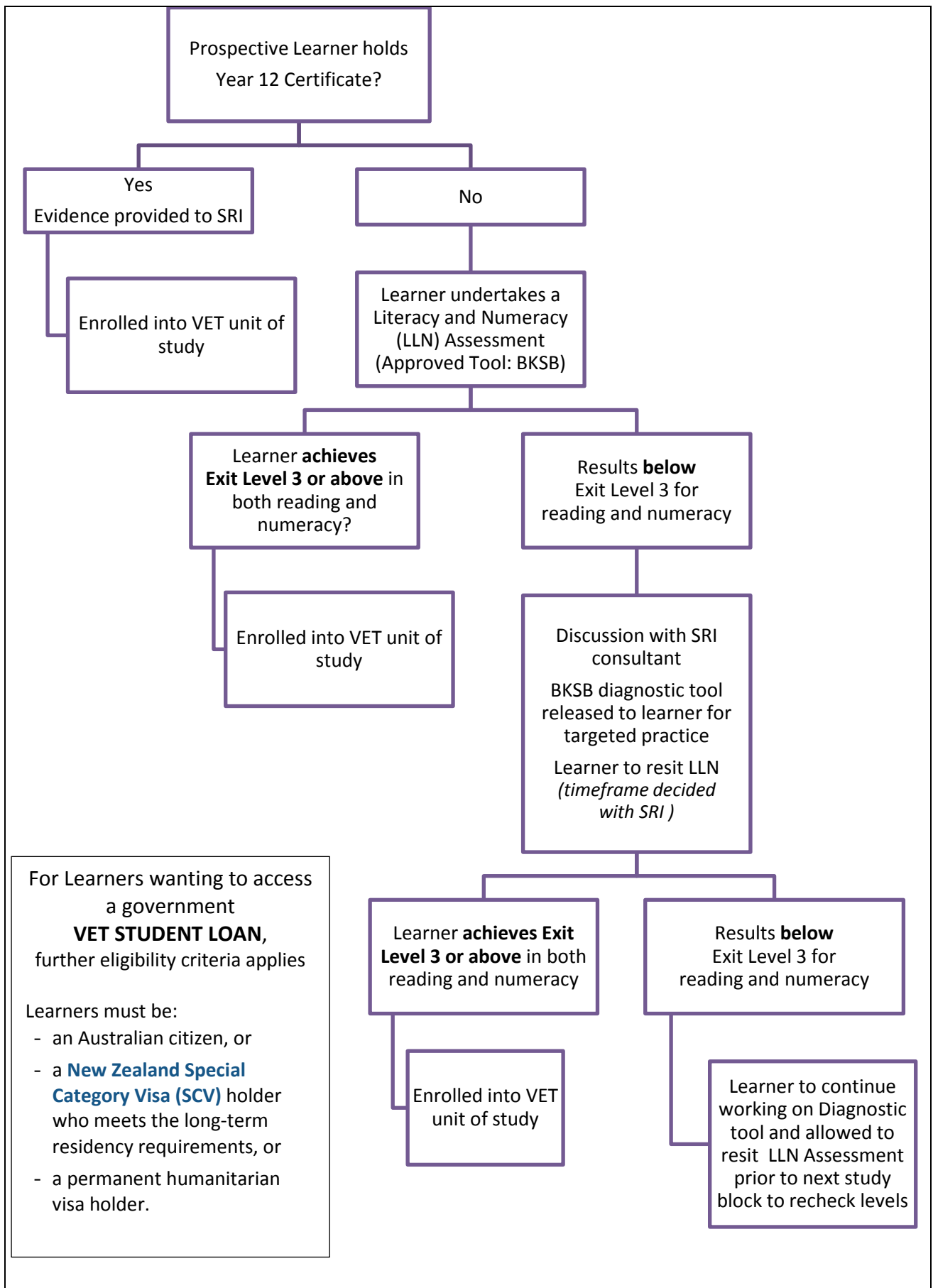


<p><b>DESCRIPTION</b></p>	<p>The following entry procedure for Sarina Russo Institute(SRI) Diplomas will be followed to ensure the prospective learner holds a Year 12 Certificate or undertakes an approved literacy and numeracy assessment and achieves competency at or above exit level 3 in the Australian Core Skills Framework for reading and numeracy, as per VET FEE-HELP/VET STUDENT LOAN Guidelines and SRI entry requirements</p>
<p><b>KPI SUMMARY</b></p>	<ul style="list-style-type: none"> <li>• For VET STUDENT LOAN students: Providers will be required to assess the capacity of each student to complete a training course before enrolment and before the offer of a VET STUDENT LOAN. For students undertaking higher level VET qualifications, it is expected these minimum requirements will include completing Year 12 or equivalent proof of competency in core skills to a level appropriate for the course in which the student is seeking to enrol (as set out in the Higher Education Support (VET Guideline) 2015)</li> <li>• For FEE FOR SERVICE students: the above will apply as per SRI’s Training and Assessment Strategy (TAS) entry requirements</li> <li>• RTO’s will publish an <i>Entry Requirements Procedure</i> (including on their websites) that sets out the requirements that a person must meet to be eligible to enrol in each VET course of study.</li> </ul>
<p><b>OVERVIEW</b></p>	<p>See over page.</p>



For Learners wanting to access a government **VET STUDENT LOAN**, further eligibility criteria applies

Learners must be:

- an Australian citizen, or
- a **New Zealand Special Category Visa (SCV)** holder who meets the long-term residency requirements, or
- a permanent humanitarian visa holder.

Procedure  
Entry Requirements for Diploma Courses



<b>EXTRA INFORMATION</b>	
<b>RELATED DOCUMENTS</b>	<i>Higher Education Support (VET) Guideline 2015 sub-paragraph 38(1)(c)</i>
<b>RELATED PROCEDURES</b>	VET STUDENT LOAN enrolment procedure